



## Engineered Timber Drop-off Initiative

in collaboration with



# Kimbriki are partnering with engineered timber recycling specialists reDirect Recycling



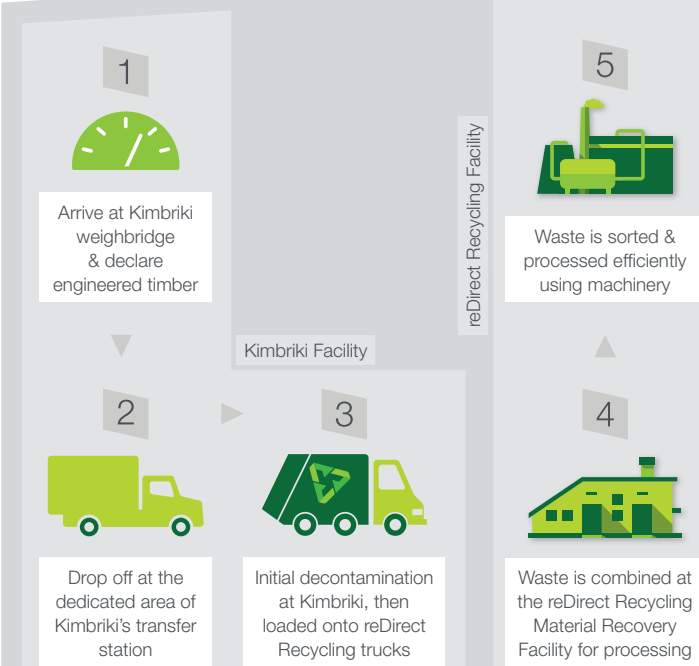
This partnership offers the opportunity to save money and the environment by sorting out your engineered timbers and tipping them separately. This will enable Kimbriki and reDirect Recycling to refine these wastes and re-manufacture them into particleboard for reuse, a fully sustainable end use for a valuable product rather than landfilling waste.

To test the concept Kimbriki and reDirect Recycling plan to run a 12-month trial where people can bring in engineered timber waste at a lower price than our normal mixed waste charge to assess the potential for an ongoing service. If the trial is successful Kimbriki plans to continue the service indefinitely.

## Engineered Timber Waste Process Flow

Your vehicle will be weighed while going in and out, and you will only be charged for the engineered timber you drop off. If you are not sure about your load, please consult with our site attendants before dropping it off.

If you regularly visit the site and generate any of the engineered timbers listed as acceptable, consider whether you can sort and save at Kimbriki!



## Acceptable Waste ✓



Raw & melamine coated particleboard offcuts



Untreated sawn timber softwood offcuts



Untreated sawn timber hardwood offcuts



Bluepine (H2F) softwood offcuts & dockings



Glulam & LVL offcuts



Plywood offcuts



Neatly stacked end of life pallets & dunnage



Pallets & crates made from sawn timber &/or composite wood components



Heat treated & MB fumigated

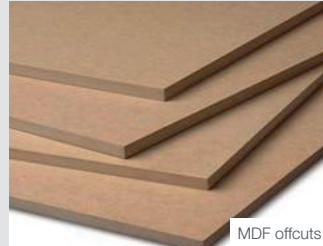


Pallets with light plywood & particleboard blocks

## Unacceptable Waste ✗



Edgetape



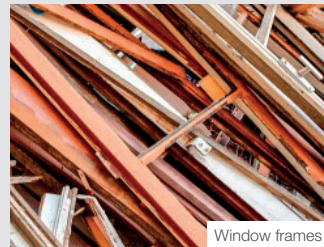
MDF offcuts



Hardboard/masonite, painted or unpainted offcuts



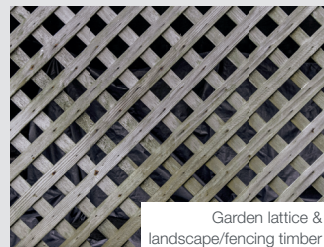
Doors



Window frames



Koppers logs



Garden lattice & landscape/fencing timber



Plastic wrap on pallets



CHEP & LOSCAM pallets



Mouldy, rotting, dark or contaminated

## How do I know the difference between particleboard, plywood, MDF & hardboard/masonite?

The easiest way to identify the type of wood you have is to look at its sides. You may need to saw into the sides to expose the cross-section if the end is painted or covered in edge tape.

|                          | PARTICLEBOARD                    | PLYWOOD   | MDF/HARDBOARD  |
|--------------------------|----------------------------------|---|--|
| Accepted Waste           | ✓                                | ✓   | ✗  |
| Surface                  | Flat, can be uniform or varied   | Flat, natural variations                            | Flat, uniform  |
| Sides                    | Rough, visible wood chips & gaps | Rough, visible layered wood, not perfectly parallel | Smooth, uniform, no visible wood grain, rings or knots |
| Particle size            | Wood chips                       | Wood layers   | Sawdust  |
| Reaction to water        | Swells, warps & discolours       | Resistant   | Swells   |
| Weight                   | Light                            | Medium  | Heavy  |
| Splinters?               | Yes                              | Yes   | No   |
| Holds nails/screws well? | No                               | Yes   | No   |

Contact us for more information on our engineered waste initiative.



(02) 9486 3512  
kimbriki.com.au



1300 001 306  
redirectrecycling.com.au